

New construction warehouse Jungheinrich AG, Hirschthal, Schöffland

2009



New storage resources were needed at the Jungheinrich company site in Hirschthal. To achieve this, a warehouse with a large forecourt roof in wood was planned.

The project

The initial idea was to build a steel hall in the style of the main building. The high price of steel contributed to the search for an alternative, and so the client came up with wood as a building material. The lower costs were convincing - and the case showed that wooden halls can economically compete with steel structures.

The construction method

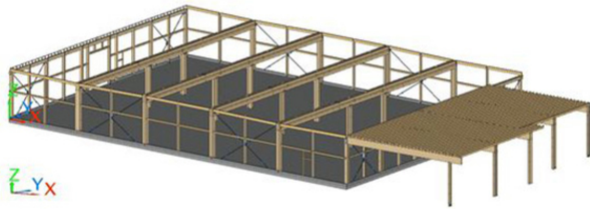
Twin girders made of glulam were chosen as the main girders, the girder dimension was 880 x 220 mm. The secondary structure consisted of ribbed slabs, the ribs made of glulam were glued above grade, rib dimension 320/80 mm, thickness of the three-layer slabs 42 mm. Wind bracing was provided by Swiss-Gewi bars arranged diagonally, with loads transferred directly to the foundations. Sandwich panels (d= 100mm) were used as external wall cladding.



Interior view carcass



Interior view



3D display



Transverse compression reinforcement with steel U-section, secondary supporting structure on bearing battens

Construction Data

- Total length 49.60 m
- Width 34.85 m
- Height 6.50
- Maximum span 13.90 m

Services of Timbatec

- SIA Phase 32 Construction project
- Statics and construction
- SIA Phase 51 Implementation project
- Technical site management and site inspections

Architect

BFB Architekten AG
4622 Egerkingen

Timber Contractor

Haudenschild Holzbau AG
4704 Niederbipp