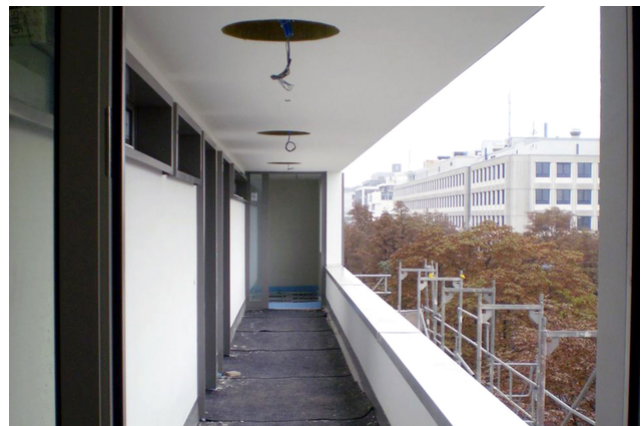


New construction of residential and commercial building Hohlstrasse, Zürich

2009



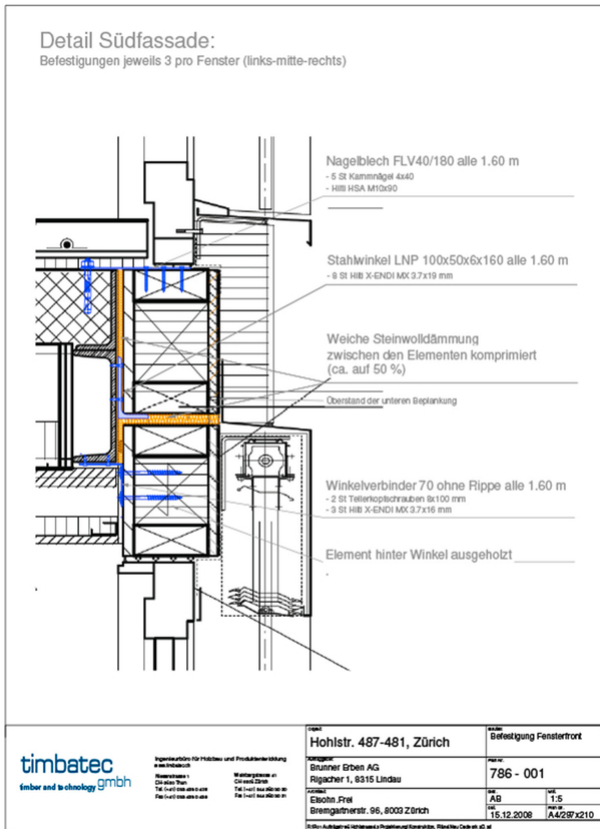
The seven-story building is an extension to the existing commercial building and spans it cantilevered.

The project

An L-shaped, 4-story extension was built over the existing 3-story commercial building. Construction method: Steel-concrete skeleton construction with non-load-bearing facade elements in timber construction.

The construction

The implementation The supporting structure of the building is realized in steel and reinforced concrete. The facades and the roof were built in timber construction meadow. The roof structure consists of a cross laminated timber board, which is laid on the steel structure. The facade elements are realized in timber frame construction and are suspended in front of the supporting structure. These are additionally insulated and plastered over the entire surface.



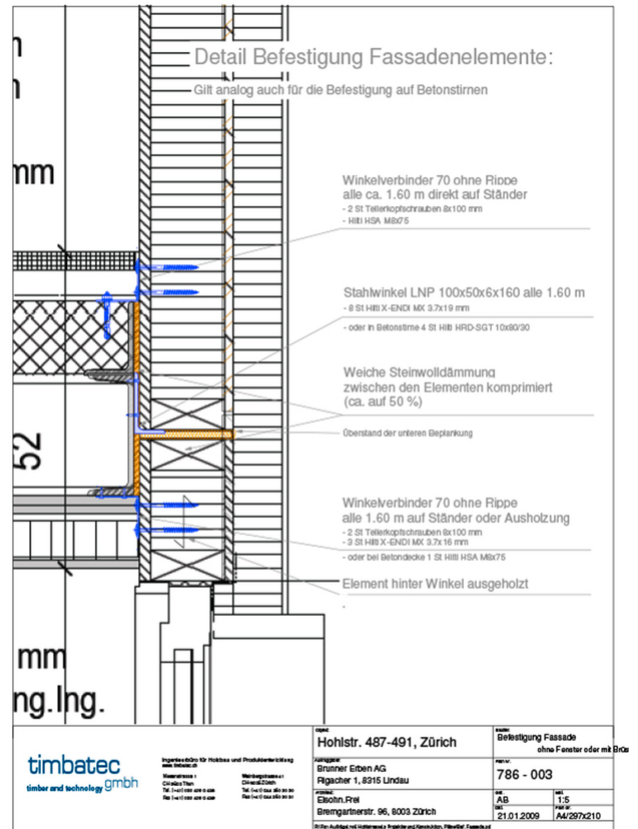
Element fastening south facade

Construction Data

- L-shaped
- 4-storey extension

Services of Timbatec

- Statics and construction of facade elements
- Technical construction management to facade elements



Detail fastening facade elements

Civil engineer

BHK Ingenieure AG
8600 Dübendorf

Timber Contractor

Brunner Erben AG
8315 Lindau

Architect

ELSOHN.FREI GmbH
8003 Zurich