

# Reference projects

## Multi-family houses

---



### **Buchholz Residential Development, Zurich**

With a total of 127 residential units, the Buchholzstrasse residential complex blends harmoniously into the popular Witikon neighborhood thanks to its timber-frame facade and high-quality wood cladding., Zurich

---



### **Residential development Zelgstrasse, Uster**

The transition from concrete to wood construction went smoothly thanks to engineering design using TS3 cross-laminated timber panels with two-way load-bearing capacity. Five buildings with 164 apartments showcase expertise in efficient wood construction and innovative structural solutions., Uster

---



### **MFH Bergstrasse, Goldau**

A three-story apartment building with timber frame construction on the residential floors was built at Bergstrasse 31 in Goldau. Timbatec was responsible for the timber construction, fire protection, and building physics planning for the new building., Goldau

---



### **Farmhouse on Engstringerweg, Regensdorf**

Following a fire, the house was renovated and converted into an apartment building with two apartments. The ceilings had to be upgraded in terms of fire protection and sound insulation, and a vertical escape route had to be constructed using timber., Regensdorf

---



### **Mettli Emergency Shelter, Thalwil**

Timbatec provided support for the planning and construction of the Mettli emergency shelter in Thalwil in the areas of structural engineering and construction, as well as fire protection and building physics., Thalwil

---



### **Expansion of the Loogarten Foundation Care Center, Esslingen**

The Loogarten Care Center in Esslingen was expanded by two stories using innovative TS3 technology in a short period of time, without interrupting operations, using locally sourced wood, thereby doubling its capacity., Esslingen

---



### **Renovation of Hörnli restaurant, Baden**

In the run-up to the architectural contract for the restoration of the medieval building «Zum Gelbhorn» in the spa district of Baden, the canton of Aargau ordered a thorough archaeological investigation of the building. This revealed a history of over 400 years., Baden

---



### **Baumschulareal development**

To date, this is probably the most extensive new construction project ever realized in Küttigen/AG. Over 150 apartments have been built in the Rombach district. Timbatec was responsible for the workshop plans for all the timber components.

---



### **Retirement home, Stein am Rhein**

The Fridau retirement apartments are located on the edge of the historic old town of Stein am Rhein and offer 30 age-appropriate apartments on three residential floors in two buildings., Stein am Rhein

---



### **Replacement Multi-family house, Dübendorf**

Timbatec was responsible for the timber construction, timber statics and fire protection in the apartment building. From the first floor upwards, everything including the staircase was built in timber., Dübendorf

---



### **Replacement Multi-family house, Zurich**

We were able to work on the structural analysis and fire protection for this apartment building. The building has a wooden staircase and therefore also a wooden building reinforcement., Zurich

---



### **Terraced house Sandblatte, Rain**

We were responsible for the timber construction statics, fire protection and building physics for these terraced single-family houses with commercial units and a shared underground parking garage., Rain

---



### **Ischlag development Dorfstrasse 82, Uetendorf**

When talent and a willingness to work together are combined, modern and sustainable living space is created. In Uetendorf, two apartment buildings with retrofitted concrete stairwells were built., Uetendorf

---



### **New construction A Hüttlenen, Flühi**

This four-story apartment building with nine units has been constructed in Flühi, LU, offering outstanding views of the surrounding mountains. Around 500 m<sup>3</sup> of Swiss wood was used to construct the CLT ceilings and walls., Flühi

---



### **Retirement home Talstrasse, Wetzikon**

The new retirement home is located at Talstrasse 19 in Wetzikon. The imposing building consists of eight full storeys with six apartments per storey., Wetzikon

---



### **MFH Lysbüchel Weinlagerstrasse, Basel**

On a 26,000 m<sup>2</sup> site, Immobilien Basel-Stadt is gradually transforming the former industrial area into a vibrant district of Basel through various construction measures as part of the Lysbüchel site development project., Basel

---



### **Hofwis residential development, Elsau**

In Elsau, a «new village center» was created with two apartment buildings, nine terraced single-family homes, a health center and a library with a multi-purpose room., Elsau

---



### **Wydäckerring residential development, Zürich**

On Wydäckerring, 183 new apartments have been built in a synergy of wood and concrete in hybrid construction., Zürich

---



### **Refurbishment «Haus zum Kiel», Zürich**

The manor house «Haus zum Kiel» is located on Hirschengraben in Zurich and was built between the medieval city wall and the baroque redoubt. The listed building had to be refurbished., Zürich

---



### **Restaurant Rössli, Mettmenstetten**

The inn “Zum weissen Rössli” in Mettmenstetten has been extensively renovated and expanded with twelve apartments added to the attic. The venerable restaurant looks back on over 500 years of history., Mettmenstetten

---



### **MFH Dorfstrasse, Wäldi**

Additional living space was created in the middle of the village of Wäldi with this replacement building in timber construction., Wäldi

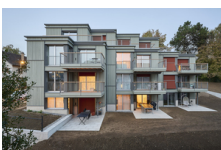
---



### **Community apartment building, Gretzenbach**

In the village center of Gretzenbach in the canton of Solothurn, a timber building with twelve apartments and a village store was built. The balconies cantilever over 3.5 meters - without any disruptive supports. An ingenious, suspended construction makes this possible., Gretzenbach

---



### **Multi family house Breitstrasse, Wallisellen**

The ten-apartment building on Breitstrasse in Wallisellen is painted in a subtle sage green. The replacement building is a pure timber construction with four floors, including a wooden staircase., Wallisellen

---



### **Giessliweg extension, Basel**

The apartment building was extended by three floors and forms the end of a row of houses from the 1980s. We were allowed to accompany englerarchitekten gmbh sia in the planning of the timber construction as specialist planners., Basel



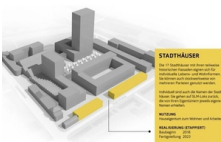
### **Replacement new barn, Aathal**

From an old barn was built a new apartment house with wood from the forest of the builder. The result is an all-wood house for four families., Aathal



### **Apartment building Maihofstrasse 8, Luzern**

The shingle facade on the seven-storey wooden building in the heart of the city of Lucerne is an eye-catcher. Fire tests allow the continuous larch cladding without disturbing aprons or fire bars., Luzern



### **Lokstadt - townhouses, Winterthur**

Where locomotives were once built, an urban living space full of forward-looking ideas is being created in the middle of Winterthur. The 17 townhouses with their partly historic facades border the Lokstadt area on its southwest side., Winterthur



### **Office and MFH Rüllenstrasse, Tägerwilen**

The new apartment building offers 5 residential units and four small office spaces., Tägerwilen



### **Addition of a storey at Widmerstrasse 73, Zurich**

The four-story residential building in the quiet district 2 in Zurich was extended with one floor. Timbatec planned the attic floor in timber construction., Zurich



### **Apartment house Mooseggstrasse, Langnau**

In the Generationenhaus Mooseggstrasse, a lot of beetle wood and almost no glued cross-sections are used. The skeleton construction is part of the architectural expression., Langnau



### **New construction Hofackerstrasse, load-bearing hybrid, Zürich**

The existing buildings on Hofackerstrasse 1-5a from the 1930s were demolished and replaced by new buildings., Zürich



### **Apartment house Stampfenbachstrasse, Zurich**

High-quality living space on a very small footprint - with the help of our engineers, the «Performative House» by the Edelaar Mosayebi Inderbitzin office has been built in the middle of Zurich., Zurich

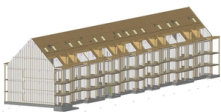
---



### **Toblerstrasse housing estate, Zürich-Fluntern**

The settlement on the Zürichberg impresses with its unusual architecture: 13 compact solitary buildings with a triangular ground plan, which create cabinet-like outdoor spaces through their twisted and staggered arrangement., Zürich-Fluntern

---



### **MFH Riburgstrasse, Basel**

The Riburg housing cooperative in Basel relies on wood for its new replacement buildings. Thanks to modular construction, ecological and cost-effective apartments can be created. The basis for this is early and integral planning., Basel

---



### **House Rheinschau, Stein am Rhein**

The listed building was completely refurbished. The retrofit was carried out without any significant interference with the existing structure., Stein am Rhein

---



### **MFH Bahnhofstrasse 109, Berlin**

On the property at Bahnhofstrasse 109 in the district of Dahlewitz, 2 innovative wooden houses were built with the aim of realizing sustainable rental housing in Blankenfelde-Mahlow., Berlin

---



### **Apartment houses Unterhub, Zollikerberg**

In the case of the apartment buildings on the lower right bank of Lake Zurich, the advantages of TS3 technology and timber construction are both noticeable and visible: the construction method allows flexible room division and timber ceilings that run from the inside to the outside without complex cantilever connections., Zollikerberg

---



### **Multi family house Bachstrasse, Buchs**

On Bachstrasse in Buchs in the canton of Aargau, a multi-family house was built in timber construction, which was originally planned as a reinforced concrete structure. The TS3 technology made it possible to change the material in the planning phase., Buchs

---



### **«Krokodil» house in Lokstadt, Winterthur**

Where locomotives and machines were once built, a new district is now being created. Urban living and working space for over 1,500 people is being created right next to Winterthur railroad station. Timbatec was responsible for the timber engineering services for the first building of the new Lokstadt., Winterthur

---



### **Conversion and extension at Eidmattstrasse 14, Zurich**

The residential building at Eidmattstrasse 14 in Zurich, built in 1967, was renovated and two storeys were added., Zurich

---



### **MFH Obere Asp, Zürich**

The apartment building in Zurich Wollishofen is built entirely in wood, including the staircase. In this building on the Aspweg hill, six new apartments were created, distributed over two full floors and an attic., Zürich

---



### **Addition of storey Dohlenweg 28+30, Zurich**

Centrally located in Zurich Oerlikon, the building offers modern and appealing rental apartments after total renovation and addition of new floors., Zurich

---



### **Fasanenhof, Frenkendorf**

In Frenkendorf, the first four-story column-and-slab structure made of wood was built. Thanks to TS3, the building once planned in concrete can be built in wood. The planning with the multi-axial load-bearing cross laminated timber panels is similar to reinforced concrete., Frenkendorf

---



### **Apartment house Alszeile, Wien**

On the edge of the Vienna Woods, the non-profit construction and housing association "Familienwohnbau" is building 52 new residential units., Wien

---



### **Blümlimattweg 15, Thun**

At Blümlimattweg 15 in Thun, Switzerland's first apartment building with a basement made of wood was built. The building is also the Living Lab of the DeepWood research project and has innovative approaches to building physics., Thun

---



### **Wehntalerstrasse 52, Zürich**

The replacement building at Wehntalerstrasse 52 in Zurich-Unterstrass is erected. With the use of clay panels, sheep's wool insulation, flexible walls and TS3 technology, the timber construction is highly interesting from an ecological and technical point of view., Zürich

---



### **Conversion Alte Dorfstr. 22, Affoltern a. A.**

In the village center of Affoltern am Albis, the residential and commercial building with the former old Schmitte on the first floor is to be preserved. Timbatec was responsible for the timber construction planning and fire protection supervision and supported the building physics with the sound insulation., Affoltern a. A.

---



### **Eichenweg, Kilchberg**

The apartment building in Kilchberg is completely built in wood, including staircase. The special feature: The wooden outer wall of the first floor is half buried in the ground., Kilchberg

---



### **Dörflistrasse, Pfäffikon**

The new apartment building on two plots on Dörflistrasse in Pfäffikon ZH will be ready for occupancy from 2020. The 4-story building offers 17 apartments with 2½ to 4½ rooms., Pfäffikon

---



### **Nauenstrasse, Tann ZH**

The newly built apartment house in Tann is located directly next to the Nauenbach. The wooden house with 4 floors offers a total of 5 rental apartments in a quiet location., Tann ZH

---



### **Addition of another storey to MFH Schäfliqraben, Wallisellen**

The Schäfliqraben development in Wallisellen consists of three apartment buildings. With the increase in wood up to additional two floors, 15 new bright apartments in wood, with exposed wood ceiling, have been created., Wallisellen

---



### **NaturQuartier Weißbache, Kufstein**

With the construction of the NaturQuartier in the fortress town of Kufstein, the largest wooden residential building in Tyrol to date has been realized., Kufstein

---



### **Bernapark extension, Deisswil**

New life is being breathed into the former cardboard factory in Deisswil near Bern. Thanks to the multi-storey addition of wooden floors and the conversion of the existing factory buildings, a new quarter is being created., Deisswil

---



### **Burgunderstrasse, Bern**

In Bern Bümpliz, the parish of Bern built a new apartment building with eight affordable rental apartments. The building is made entirely of wood - including the staircase, elevator shaft and escape stairs., Bern

---



### **Usterstrasse Development, Illnau**

The new single-family houses are located directly in the historic center of Illnau. Due to the modern wooden construction as well as the wooden roofing, contemporary comfort and historical charm were optimally combined., Illnau

---



### **Pasa, Stein am Rhein**

Five new apartments were created in each of the two newly built apartment buildings in Stein am Rhein. Both houses consist of two full floors and a recessed attic floor., Stein am Rhein

---



### **Apartment houses Holleracher, Grossaffoltern**

Four apartment buildings with TS3 floor slabs were built in Grossaffoltern in the Bernese Seeland region. This is the first residential development worldwide to use the innovative technology., Grossaffoltern

---



### **Witikonstrasse, Zürich**

In the quiet Witikon neighborhood, the PWG Foundation had 38 new apartments built, which will be ready for occupancy in summer 2020. These affordable apartments are sought after in the rather more expensive neighborhood of the city of Zurich., Zürich

---



### **Addition of another floor to MFH «In der Ey», Zurich**

The apartment buildings «In der Ey» in Zurich are part of a development from the 1950s. As part of a complete renovation, the buildings were extended with an annex and a storey., Zurich

---



### **Albulastrasse, Zürich**

The new 7-story building on Albulastrasse in Zurich with 30 new apartments was completed at the end of December 2019. As the tight space conditions do not allow an access for the fire department everywhere, Timbatec planned a safety staircase made of wood., Zürich

---



### **Stoffel, Wädenswil**

The lightweight timber facade was attached in front of the massive reinforced concrete structure. The wooden façade with sophisticated sheet metal aprons in complex geometries forms the outer shell of this superstructure., Wädenswil

---



### **Addition Greulich, Zurich**

In the middle of the city of Zurich, two apartment buildings were raised. The additional floor provides space for 8 smaller apartments., Zurich

---



### **Addition of another storey to MFH Zwinglistrasse, Zurich**

The modest worker's dwelling from the late 19th century was rebuilt and raised. Timbatec accompanied the necessary strengthening of the load-bearing structure as specialist planner., Zurich

---



### **Superstructure «Die Mühle», Bergdietikon**

The residential development in Bergdietikon consists of an apartment building with 13 residential units and 8 single-family houses. The slight slope offers a fantastic view., Bergdietikon

---



### **Superstructure Alpenblick, Müntschemier**

The Alpenblick development in Müntschemier is an attractive residential property with a high quality of living. Timbatec supported the architects in particular with the parapets in timber construction and the fire protection., Müntschemier

---



### **«sue+til» residential development, Winterthur**

«sue+til»: Currently the largest residential development made of wood in Switzerland, it comprises 307 apartments, a mixed-use first floor and 200 parking spaces. The 6-storey building is a showcase project for timber construction in Switzerland., Winterthur

---



### **Apartment house, Küsnacht ZH**

In the case of the apartment building on Zürichstrasse in Küsnacht, practically everything that protrudes from the ground is made of wood. The building, which is located in the middle of the Zurich suburb, comprises four apartments with a view of Lake Zurich., Küsnacht ZH

---



### **Semidetached house Burenweg, Zurich**

The listed double dwelling house from the 16th century had to be repaired. The building fabric was to be preserved and the living comfort brought up to a modest but contemporary standard., Zurich

---



### **Barn and shed Fischentrüti, Horgen**

The former farm with barn and coach house was converted and now houses apartments, studios and a playgroup. The intercultural garden remains a meeting point and place for encounters., Horgen

---



### **Zwysigstrasse 5+7, Zürich**

The new replacement buildings in Zurich Altstetten are among the first projects that can do without concrete in the stairwell as well. This has been possible since the revision of the fire protection guidelines in 2015., Zürich

---



### **Vogelsang extension, Wetzikon**

In the middle of the city of Wetzikon in the canton of Zurich, a housing estate was renovated. By adding wooden floors, 36 new residential units were created on top of the prefabricated buildings designed by the architectural icon Ernst Göhner., Wetzikon

---



### **Apartment houses Wolf and Edelweiss, Andermatt**

After The Chedi Hotel, Timbatec has been awarded another contract in the Andermatt Reuss vacation village. For the two apartment buildings Wolf and Edelweiss, the timber engineers were responsible for the statics of the roof structure as well as for the fire protection of the shingle façade of the one residential building., Andermatt

---



### **Apartment house Zwinghof, Neerach**

Instead of an old farmhouse in the Zurich Unterland, two residential buildings in timber construction were built. The four residential units find space within the former Volumentrie. The Zwinghof in Neerach thus retains its original character., Neerach

---



### **Konkordiastrasse, Zürich**

In the middle of a Zurich villa district, an apartment building was constructed exclusively of wood. Thanks to the timber construction method, the four apartments of the new building were ready for occupancy within one year from the start of construction., Zürich

---



### **Development Lee Side, Faulensee**

The location is fantastic. Living in the Lee Side development in Faulensee means living with a view of the lake and the Alps. The two residential buildings are slightly elevated above Lake Thun. The cantilevered roof was constructed with panels of cross laminated timber., Faulensee

---



### **Wooden facade apartment houses Buchegg, Zürich**

In Zurich Wipkingen, the Waidberg building cooperative replaced an existing housing estate from the 1930s. Timbatec was responsible for all timber engineering services for the facades of the three apartment buildings with 110 apartments., Zürich

---



### **A residence made entirely of Swiss wood, Köniz**

The residential building Arborea in Köniz, which is hidden behind the arcades built in solid construction, is a pure wooden building., Köniz

---



### **Bergheim, Tägerwilen**

The Bergheim residential building in Tägerwilen, Thurgau, was constructed largely in wood. Special attention had to be paid to sound insulation for the four condominiums in the new building., Tägerwilen

---



### **Residential and commercial building MIN MAX, Opfikon**

Wood dominates the MIN MAX residential building in Glattpark. The two upper floors are made entirely of wood, while the lower floors have been designed as a hybrid construction., Opfikon

---



### **Wooden housing estate Muttimatte, Brügg**

The Muttimatte housing estate for communal living in the second half of life in Brügg is largely made of wood. This makes the settlement of the Biel-based housing cooperative biwog one of the largest timber construction projects in the region at present., Brügg

---



### **Brühlmatt, Urdorf**

The new Brühlmatt apartment building, which was realized as a hybrid building, has 32 apartments in the middle of Urdorf. The apartments are accessible via open arcades that are slightly offset from the facade., Urdorf

---



### **Saumacker, Zürich**

Not far from Zurich Altstetten train station, the PWG Foundation had an apartment building modernized and extended. Timbatec was allowed to accompany the construction project as timber engineer and fire protection planner., Zürich

---



### **Settlement Oberfeld, Ostermundigen bei Bern**

On the edge of the Ostermundigenberg, the car-free wooden housing estate "Oberfeld Ostermundigen" was built with around 110 apartments. Close to nature and yet quickly in the center, the settlement combines the advantages of the urban lifestyle with rural idyll., Ostermundigen bei Bern

---



### **Densified building in the small town, Lenzburg**

More living space is in demand not only in the large centers, but also in smaller towns that are steadily increasing their population. Take Lenzburg, for example. In order to create more apartments, a commercial building was extended by two floors in timber construction., Lenzburg

---



### **Brüggläcker, Zürich Schwamendingen**

The Brüggläcker housing estate is a replacement building realized by the Bahoge building cooperative between the streetcar line and Funkwiesenstrasse in Zurich Schwammendingen., Zürich Schwamendingen

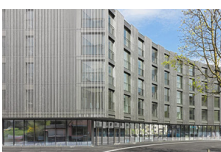
---



### **Seestrasse extension, Zürich**

The object is a four-story apartment building near Lake Zurich. The first floor is used for offices, the upper floors serve as apartments. The attic is undeveloped., Zürich

---



### **Johnsonhaus, Köniz**

In the heart of the municipality of Köniz, in a sunny location close to the center, a residential and commercial building has been realized on Neuhausplatz. Not only the facade but also the supporting structure is made of wood., Köniz

---



### **MFH Schönberg East, Bern**

The four-story wooden building stands on the eastern outskirts of Bern. Thanks to recesses and inwardly offset balconies, small areas are created that make the object with dimensions of 37 x 16 x 12 m appear smaller and break up the silhouette., Bern

---



### **MFH Tola, Saas-Fee**

In the middle of the village, in a prime location, an apartment building with 7 exclusive condominiums was built. Overheight rooms open the view on a chain of majestic snow mountains., Saas-Fee

---



### **Addition of a storey Lessingstrasse, Zürich**

The addition of a storey to the existing office building at Lessingstrasse 3 in Zurich proved to be a challenge, but Timbatec solved it in a well thought-out manner. Today, the building presents itself with two additional floors in timber construction. Here 5 new apartments were created., Zürich

---



### **MFH Ringstrasse, Zürich Oerlikon**

The MFH Ringstrasse is a replacement building in mixed construction with 14 apartments in Minergie-P-Eco standard and was designed according to the SIA efficiency path energy., Zürich Oerlikon

---



### **MFH Wiesengrund, Küsnacht ZH**

The MFH Wiesengrund is a new four-story building with four exclusive apartments in Küsnacht. It is the first apartment building in the canton of Zurich with the Minergie-A label ZH-001., Küsnacht ZH

---



### **Conversion Haus zum Kiel, Zürich**

The baroque Haus zum Kiel is located on Hirschengraben in Zurich's old town. The building exhibited severe subsidence and various damages to the building structure and supporting structure. Timbatec AG was commissioned to examine load transfer methods and define measures for the conversion., Zürich

---



### **Green rooms - Baufritz, Uetendorf**

The company BAUFRTIZ AG built a building for its Swiss branch in Uetendorf BE. However, the building at Steghalten 6 is clearly more than just an office complex., Uetendorf

---



### **Apartment house SolVita7, Biel/Bienne**

In a preferred location, the building offers space for seven exclusive apartments. The modern timber construction meets the MINERGIE-ECO standard. The high requirements for eco-balance and energy consumption are thus fulfilled., Biel/Bienne

---



### **Avellana residential development, Schwamendingen**

Due to difficult space conditions and expensive soil, the new building was optimally adapted to the plot boundaries. This resulted in the elongated body of the new building, which nestles on the slope., Schwamendingen

---



### **New construction MFH Rütihof, Uerikon**

The Rütihof residential complex is situated in an exclusive location on a small plateau above Lake Zurich in Uerikon., Uerikon

---



### **New construction MFH Habsburgstrasse, Zürich**

An exciting new building project on Habsburgstrasse in Zurich. A 5-storey MFH as a pure timber construction. Solid construction despite difficult fire protection conditions. The central staircase core and the fire wall to the neighboring building brace the column-slab construction., Zürich

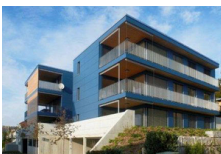
---



### **New construction MFH Poststrasse, Zürich**

An apartment building as the first Minergie-P-Eco construction in the municipality of Spreitenbach - Timbatec was there! Special mention should be made of the interior walls with storage mass for the solar direct gains., Zürich

---



### **MFH Trottenweg, Wohlen**

In a picturesque, elevated location on the south-western slope of Wohlen, this 6-family mini-house was realized in timber construction. The apartments are arranged as two-flats on both sides of the staircase and built in pure timber construction., Wohlen

---



### **New construction housing estate Watt, Regensdorf**

The development in the Minergie-P Eco standard is designed as a zero-energy housing estate and consists of 2 multi-family houses and 7 terraced single-family houses. The entire settlement is built from the first floor in timber construction., Regensdorf

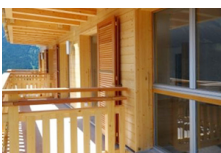
---



### **Extension/Renovation MFH Salvatorstrasse, Zürich**

The existing apartment building on Salvatorstrasse underwent a total renovation to create more space, comfort and aesthetics. The living room extension consists of hollow box elements, which rests on a post and beam construction at the front and is clad with a glass front., Zürich

---



### **New construction Chalet Schwarzbirg, Wengen**

This is the story of a beautiful chalet in gorgeous Wengen in the Bernese Oberland, which features 2-axis cantilevers and complex calculations., Wengen

---



### **Replacement new building Murmeli, Hasliberg-Wasserwendi**

In the beautiful Hasliberg stands a replacement new building, a multi-family house with eight apartments over 3 floors., Hasliberg-Wasserwendi

---



### **New residential and commercial building Hohlstrasse, Zürich**

The seven-story building is an extension to the existing commercial building and spans it cantilevered., Zürich

---



### **Florastrasse 28/30 extension, Zürich**

A renovation with the aim of increasing the interior and exterior space. How should this succeed?, Zürich

---



### **Renovation MFH Segantinistrasse, Zürich**

The apartment building on Segantinistrasse in Zurich was raised in the course of total renovation and upgraded to the Minergie-P standard with a prefabricated new building envelope. The complete new building services are integrated in the prefabricated wooden elements, which were placed in front of the existing exterior walls., Zürich

---



### **New construction/renovation of the Mühleareal complex, Herbligen BE**

A five-story apartment building and 2 x 3 row single-family homes are clustered around the existing mill building., Herbligen BE

---



### **Renovation / new construction farmhouse summer, Büren zum Hof**

A farmhouse in the center of the village (of monumental importance) in poor structural condition was to be renovated or partially replaced. The plan was to demolish and rebuild the farmhouse and only renovate the residential part., Büren zum Hof

---



### **Addition of storey to apartment house Bruhin, Pfäffikon SZ**

On top of the existing two-family house in a natural location, new living space was created by a one to two-storey extension in timber frame construction. Special features are the underbeam-free flat roof construction and the floor-to-ceiling glass fronts., Pfäffikon SZ

---



### **New construction MFH power plant B, Bennau**

The multi-family house Kraftwerk B is located in the village center of Bennau/SZ, right next to the Catholic church. It is the 1st plus-energy house in Switzerland, which means that it produces more energy than it consumes., Bennau

---



### **Filling of residential and commercial building Weststrasse, Zürich**

The property at the intersection of Weststrasse and Birmensdorfstrasse was raised to create additional apartments and office space. The extension was executed in timber construction. Something special is the cantilevered, column- and purlin-free roof construction., Zürich

---



### **Renovation/addition of storeys to MFH Heizenholz, Zürich**

In the case of the two Heizenholz apartment buildings in Zurich, built in 1963, the traces of time were clearly visible after more than 40 years of operation. The thermal standards of the facades and windows were no longer up to standard. In view of rising energy prices, the building owner decided to completely renovate the facade. In order to upgrade the buildings and create new living space, it was also decided to add an additional storey. This resulted in two modern, contemporary attic apartments., Zürich

---



### **Redevelopment Höchhus, Steffisburg**

This property in Steffisburg belongs to the Höchhus Foundation and is a listed building. The Höchhus is one of the oldest buildings in the village., Steffisburg

---



### **New construction MFH Silberhorn, Beatenberg**

Beaten GmbH planned to build a development with 4 apartment buildings on the site of the former Hotel Silberhorn. The buildings are built in pure timber construction except for a massive development core., Beatenberg

---



### **New construction apartment house Walker, Bitsch**

The building plot is centrally located on Furkastrasse in Bitsch. Its prominent neighbor in the direction of Goms is the new Raiffeisenbank building: a white, monolithic cube. This presented an architectural challenge to create a valid counterpart to this strong presence. The plan was for a Minergie-standard apartment building with a parking garage., Bitsch

---



### **New construction vacation homes Lengi Müru, Saas-Fee**

The new building Lengi Müru includes four vacation single-family houses at the top of the village Saas-Fee. The houses are equipped with cantilevered terraces that are simultaneously cut into the building. They are vacation chalets of a high standard. The client and architect is Jürg Bumann, a native of Saas-Fee who runs his architectural practice in Zurich., Saas-Fee

---



### **MFH Chappelistei, Zwillikerstrasse, Ottenbach**

On the property on Zwillikerstrasse in Ottenbach, two MFAs were to be built. These comprise 2 and 3 floors respectively and contain 4 and 6 large condominiums. It is planned to build the walls, ceilings and the roof in optiholz® board piles. The walls outside will be insulated and plastered., Ottenbach

---



### **New construction MFH Mühlemann, Kiesen**

The client intended to build a 3-family house with an annex for garages and recreation room. The upper two floors should be able to be used as an apartment for some time., Kiesen

---



### **Increase Appaloosa, Spiez**

A two-story addition was planned on top of the existing building of about 20 x 25 m floor area. The existing building - an approximately 30-year-old object with a flat roof consisted of reinforced concrete columns in a grid of and 3 x 5 m and glulam beams placed above., Spiez

---



### **Reconstruction-renovation tith barn, Grundbach area, Thun**

The tith barn was one of the oldest preserved buildings in the city of Thun. After a fire in 1999, it had to be renovated in cooperation with the preservation of historical monuments of the canton of Bern., Thun

---



### **MFH Supply Center Weier, Schwarzenegg**

The municipality of Oberlangenegg decided at the beginning of 2000 - it was the time when Lothar raged - to build this project in wood. With a supply center that should be deliberately dominant and quickly recognizable, Schwarzenegg gets a village center that represents and enlivens the village image., Schwarzenegg

---



### **MFH Scheurendörfli, Büren an der Aare**

At the parent farm, a replacement new building in wood was created, which, in addition to apartments for the younger generation, should provide additional apartments for the purpose of sale/rent. In addition, 2 apartments are used as a retirement and nursing home group., Büren an der Aare

---



### **Reconstruction Bälliz 29, Thun**

The existing building in the center of Thun was converted into business premises and apartments. On the 1st floor, three high reinforced concrete girders were installed, which protruded from above about 70 cm into the clearance gauge. The planned store was to be column-free with a smooth soffit. The existing beam layers were to remain unchanged., Thun