

# Apartment house Stampfenbachstrasse, Zürich

2022

---



High-quality living space on a very small footprint - with the help of our engineers, the "Performative House" by the Edelaar Mosayebi Inderbitzin office has been built in the middle of Zurich.

## The project

The six-story replacement building on Stampfenbachstrasse in Zurich accommodates small households in a good 55 square meters. A cleverly placed revolving wall, movable wardrobes and drawers in the hollow floor make the living space changeable and versatile, and residents need only bring a few pieces of furniture.

## The construction

The performative house is built entirely in wood from the first floor upwards; the existing basement was retained and converted. The floor slabs and walls of the performative house are largely constructed of visible cross-laminated timber panels. Vertical loads are transferred to the wall below by means of beech dowels at the floor transition to avoid cross-laminated timber compression.

## The challenge

Due to the noisy Stampfenbachstrasse, the requirements for the facade are maximum. An acoustically decoupled outer wall shell and soundproof windows ensure noise protection. For the load transmission detail with beech dowels, acoustic investigations were carried out by our building physicists on a 1:1 mock-up.

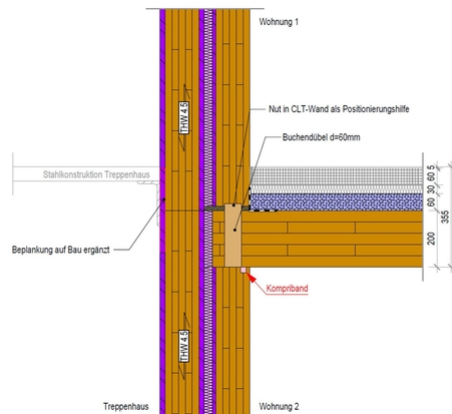
[Hochparterre-Artikel - Das bewegte Haus](#)



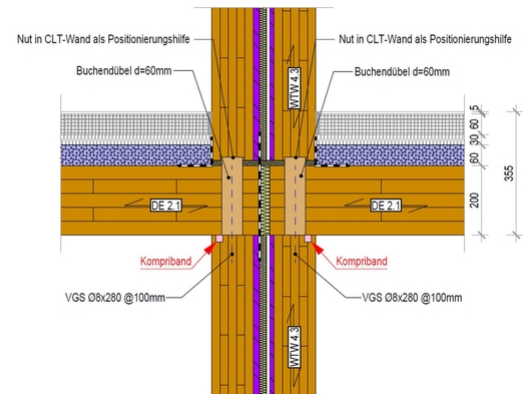
Drehbare Wand



Schallmessung im Mockup



Konstruktion Treppenhauswand



Detail Innen

### Construction Data

- Number of floors: 6
- Floor area: 2036 m<sup>2</sup>
- CLT: 503 m<sup>3</sup>
- Cross laminated timber: 8 m<sup>3</sup>
- DUO: 35 m<sup>3</sup>

### Construction costs

- BKP 214 CHF 1.2 Mio.

### Services of Timbatec

- SIA Phase 31 Preliminary design
- SIA Phase 32 Construction project
- SIA Phase 41 Tendering and comparison of offers
- SIA Phase 51 Implementation project
- SIA Phase 52 Execution
- Work planning 3D and 2D
- Technical planning Building physics
- Fire protection planning
- Statics and construction
- SIA Phase 53 Commissioning

### Client

UTO Real Estate Management AG  
8008 Zürich

### Architect

Edelaar Mosayebi Inderbitzin AG  
8004 Zürich

### Timber construction

Timbatec Holzbauingenieure (Schweiz) AG Zürich  
8005 Zürich

### Civil engineer

wlw Bauingenieure AG  
8051 Zürich

### Building physics

Timbatec Holzbauingenieure (Schweiz) AG Zürich  
8005 Zürich

### Photography

Edelaar Mosayebi Inderbitzin AG  
8004 Zürich

### Visualization

Zuend, Agi Simoes