

Albulastrasse, Zürich

2019



The new 7-story building on Albulastrasse in Zurich with 30 new apartments was completed at the end of December 2019. As the tight space conditions do not allow an access for the fire department everywhere, Timbatec planned a safety staircase made of wood.

The project

The workshop of WN Metallbau AG previously stood on the site of the new building. With the new building, the workshop was rebuilt. On it now stands the apartment building with 30 apartments. The workshop remained in operation during the entire construction period. The basement, first floor and second floor are used for commercial purposes and as a parking garage. The apartments are located above. Thus, the basement houses the bicycle parking spaces, technology and storage rooms. On the first floor there is a workshop and office. The 1st floor offers space for cellars and laundry rooms. Also here are the parking spaces for the cars, which are accessible by a car lift from the first floor. Places for e-mobiles are also available.

The construction

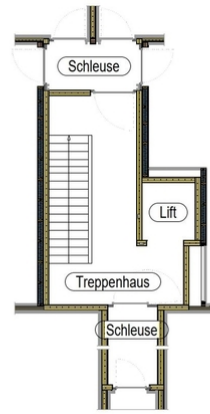
The basement up to and including the 1st floor are built in solid construction. The upper floors of the building with the apartments are built in timber construction. Conventional timber elements were used for the exterior walls. The ceilings consist of box girder elements, in some cases solid wood ceilings were used for fire protection reasons. The special feature of this building is that the safety stairwell is made of wood.

The challenge

Since no longitudinal facade of the building is accessible to the fire department, a safety stairwell with airlocks had to be constructed. This stairwell and the airlocks were made of encapsulated CLT panels. The remaining ceilings were constructed as box girders and the walls as frame construction.



Exterior view



Detail of the stairwell



Stairwell during construction

Construction Data

- Three-layer / Kerto boards 200 m³
- Construction/ BSH wood 220 m³
- CLT boards 175 m³

Construction costs

- BKP 1-9: 12.7 million Swiss francs
- BKP 2: 10.5 million Swiss francs
- BKP 214: 1.5 million Swiss francs

Services of Timbatec

- SIA Phase 31 Preliminary project
- SIA Phase 32 Construction project
- SIA Phase 41 Tendering and comparison of offers
- SIA Phase 51 Implementation project
- SIA Phase 52 Execution
- SIA Phase 53 Commissioning
- Statics and construction
- Technical planning for fire protection
- Fire protection quality assurance QSS2

Architect

POINT Architektur + Planung, 8047 Zurich and DN Architekten, 8004 Zurich

Client

Peter Kerschbaumer, 8048 Zurich

Timber construction engineer

Timbatec Holzbauingenieure Schweiz AG, 8005 Zurich

Timber construction

Hector Egger Holzbau AG, 4901 Langenthal

Civil engineer

Urech Bärtschi Maurer AG, 8037 Zurich

Building physics

Mühlebach Partner AG, 8404 Winterthur

Construction management

Walter Müller Architektur und Baumanagement, 8804 Au/ZH