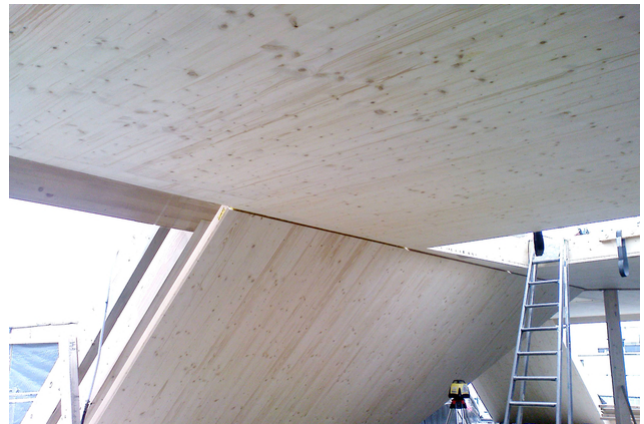


# Filling of residential and commercial building Weststrasse, Zürich

2008



The property at the intersection of Weststrasse and Birmensdorfstrasse was raised to create additional apartments and office space. The extension was executed in timber construction. Something special is the cantilevered, column- and purlin-free roof construction.

## The project

On the part of the building along the Weststrasse, which was topped up with apartments, the timber construction is realized in a classic frame construction with a hollow box roof. The extension on the side facing Birmensdorferstrasse is largely column-free and self-supporting to allow the most flexible office use possible.

## The construction method

Only in the ridge-valley diagonal, in order to be able to maintain the joist-free appearance, two supports had to be introduced. Otherwise, the addition is designed as a blast structure, with the two roof sides functioning as "struts" and the roof slice as a "compression beam". The loads for the overall bracing are transferred via the roof slice into the fire walls as well as the massive stairwell with elevator.



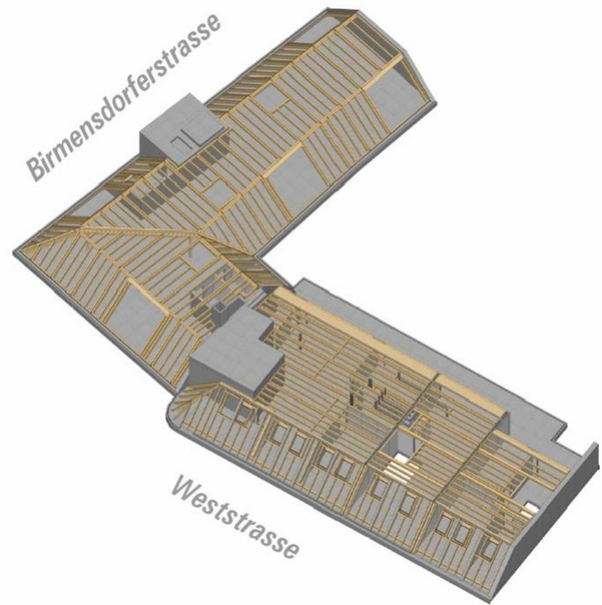
Interior view ridge



Interior view throat



Insert skylight



General view

### Construction Data

- 350 m<sup>2</sup>
- 450 m<sup>2</sup>

### Services of Timbatec

- SIA phase 32 construction project
- Structural analysis and design
- SIA Phase 41 Tendering and comparison of offers
- SIA Phase 51 Implementation project
- Site management and site inspections

### General Contracting

Allreal Generalunternehmung AG  
8050 Zurich