

# Facade Leimere Park Aarberg, Aarberg

2023

---



In a prime location in Aarberg, a commercial building has been constructed for different needs and tenants from various sectors. The building's calling card is the facade made of silver fir cladding with a green color scheme.

## The project

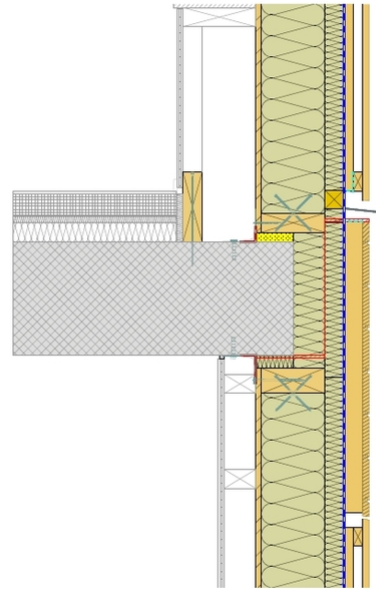
The Leimere Park commercial center was designed as a multifunctional building that meets various needs and offers tenants a wide range of benefits. The entire first floor is designed as a retail store. The upper floors contain flexibly divisible commercial space that can be used for a variety of purposes. The large photovoltaic system on the roof generates electricity for the property and for the electric charging stations for cars and bicycles. The building is designed as a hybrid construction. The load-bearing structure in solid construction was built in advance and clad with exterior wall elements in timber frame construction.

## The construction method

A nearby timber construction company precisely prefabricated the facade elements using timber frame construction. A mobile crane lifted the exterior wall elements between the facade scaffolding and the building structure. These were attached to the building shell. The chosen construction method allowed the building envelope to be closed quickly, enabling an early start to the interior work. The final assembly step was the installation of the facade cladding.

## The challenge

Due to the many repetitions in the facade, the detail connections are designed for efficient, fast assembly. The client wanted a low-maintenance facade with a green coloring. Green pressure-impregnated fir cladding, homogenized with green-coloured facade oil, met this requirement.



#### **Construction Data**

- 3150 m<sup>2</sup> Office and commercial space

#### **Construction costs**

- BKP 214: 460'000 CHF

#### **Services of Timbatec**

- SIA Phase 32 Construction project
- SIA Phase 41 Tendering and comparison of offers
- SIA Phase 51 Implementary project
- SIA Phase 52 Execution
- Statics and construction

#### **Client**

Stecma Park AG  
8852 Altendorf

#### **Architect**

Frey Architekten AG  
4600 Olten

#### **Timber construction**

Stuber & Cie AG  
3054 Schüpfen

#### **Photography**

Stecma Park AG  
8852 Altendorf