

# Extension of the kindergarten in Tobel, Meilen

2024

---



Renovation and expansion of the Tobel kindergarten in Meilen: addition of a floor to the attic and renovation of the ground floor with new access, additional group rooms, kitchens, and sanitary facilities for modern operation.

## The project

The kindergarten in Tobel, Meilen, has been extensively renovated and expanded. The project includes the addition of a new floor to the attic and the renovation of the ground floor. On the ground floor, a new staircase and elevator were installed to provide access to the attic; a kitchen and new sanitary facilities were also added. The expanded attic provides additional group rooms, further sanitary facilities, and a second kitchen. This has increased the usable space and brought the facility into line with modern operational requirements.

## The construction method

The building was constructed using timber frame construction. As the existing concrete ceiling was not sufficient to bear the additional loads, a new false ceiling made of horizontal glued laminated timber was installed. On the ground floor, the existing exterior walls were insulated using wooden battens. A new wooden facade was installed across both floors. The roof consists of lignature elements.

## The challenge

The large spans of the window front required the use of Kerto beams. Another challenge was the structural transition between the new and existing buildings. To transfer the load from the extension, some sections had to be supported on steel brackets.



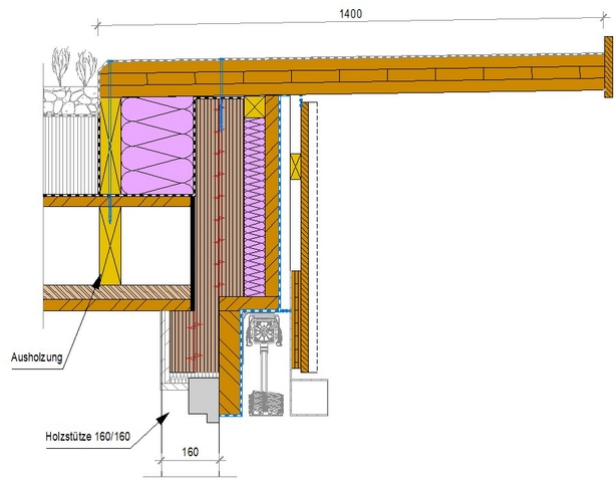
In addition to the main rooms, separate group and therapy rooms were also created.



As part of the expansion, the kindergarten was given a new wooden exterior.



The vertical wooden facade cladding extends over both floors. (Photos: drei A Architekten GmbH)



Finishing detail roof edge

### Construction costs

- BKP 214 CHF 578'000
- Total construction costs approx. CHF 3.4 million

### Services of Timbatec

- SIA Phase 31 Preliminary design
- SIA Phase 32 Construction project
- SIA Phase 41 Tendering and comparison of bids
- SIA Phase 51 Implementation project
- SIA Phase 52 Execution
- SIA Phase 53 Commissioning

### Architect

drei A Architekten GmbH  
8706 Meilen

### Client

Gemeinde Meilen  
8706 Meilen

### Timber construction

Holzbau Oberholzer GmbH  
8733 Eschenbach SG