

# Reference projects

## Commercial & Industrial Buildings

---



### Replacement construction of old brickworks, Haufland Riedikon

The replacement construction of a modern office and commercial building using timber construction methods is combined with the use of clay as a material. The implementation impresses with its sustainable construction and excellent CO2 balance., Haufland Riedikon

---



### Forester's lodge, Zollikon

Naturally, the wood used for the forester's lodge had to come from their own forest. Accordingly, care had to be taken to ensure that the components did not make it difficult to use the company's own wood., Zollikon

---



### Terraced house Sandblatte, Rain

We were responsible for the timber construction statics, fire protection and building physics for these terraced single-family houses with commercial units and a shared underground parking garage., Rain

---



### Hofwis residential development, Elsau

In Elsau, a «new village center» was created with two apartment buildings, nine terraced single-family homes, a health center and a library with a multi-purpose room., Elsau

---



### Refurbishment «Haus zum Kiel», Zürich

The manor house «Haus zum Kiel» is located on Hirschengraben in Zurich and was built between the medieval city wall and the baroque redoubt. The listed building had to be refurbished., Zürich

---



### Hall Klotzholz, Wilchingen

The new hall for the Klotzholz company includes a carpentry workshop, a joinery, a stable for the horses, a hay store and an apartment., Wilchingen

---



### Community apartment building, Gretzenbach

In the village center of Gretzenbach in the canton of Solothurn, a timber building with twelve apartments and a village store was built. The balconies cantilever over 3.5 meters - without any disruptive supports. An ingenious, suspended construction makes this possible., Gretzenbach

---



### **Facade Leimere Park Aarberg, Aarberg**

In a prime location in Aarberg, a commercial building has been constructed for different needs and tenants from various sectors. The building's calling card is the facade made of silver fir cladding with a green color scheme., Aarberg



### **Warehouse and production hall, Niederglatt**

Hall 95 in Niederglatt combines storage and production space with residential use on the upper floor. Large column-free storage units allow flexible use., Niederglatt



### **Giessliweg extension, Basel**

The apartment building was extended by three floors and forms the end of a row of houses from the 1980s. We were allowed to accompany englerarchitekten gmbh sia in the planning of the timber construction as specialist planners., Basel



### **Limeco Hybrid Power Plant, Dietlikon**

Limeco's new power-to-gas plant makes a positive contribution to climate change. It will produce renewable gas from waste and wastewater and feed it into the grid from winter 2021-22. From the parking ceiling upwards, the plant building is a pure timber construction., Dietlikon



### **Rénovation Caritas Jura, Delémont**

The project for the renovation of the Caritas store Jura includes the renovation of the roof of building B and the construction of a new first floor slab within the existing building., Delémont



### **QuarTierhof Höngg, Zürich**

The QuarTierhof Höngg is a small farm in Zurich-Höngg. It is a meeting place for people in the neighborhood who are interested in nature, agriculture and animals., Zürich



### **Production hall von Siebenthal Holzbau AG, Mauren TG**

The company von Siebenthal Holzbau AG from Mauren TG has extended its premises with the construction of the new production hall., Mauren TG



### **New construction RFSM Building G, Fribourg**

To accommodate all the vehicles of staff and visitors, the mental health network expanded its site in Villars-sur-Glâne with a parking garage. On the attic floor, 1150m<sup>2</sup> of practice rooms and meeting rooms were created in wood construction., Fribourg



### **VIDIT workshop, Bubikon**

With the new construction of the workshop, a representative and sustainable company headquarters has been built for the Hustech company. A skeleton structure and beams and columns made of beech wood and TS3 technology reflect the innovative spirit of the company., Bubikon

---



### **Conversion Alte Dorfstr. 22, Affoltern a. A.**

In the village center of Affoltern am Albis, the residential and commercial building with the former old Schmitte on the first floor is to be preserved. Timbatec was responsible for the timber construction planning and fire protection supervision and supported the building physics with the sound insulation., Affoltern a. A.

---



### **Bernapark extension, Deisswil**

New life is being breathed into the former cardboard factory in Deisswil near Bern. Thanks to the multi-storey addition of wooden floors and the conversion of the existing factory buildings, a new quarter is being created., Deisswil

---



### **Conversion Coop City St. Annahof, Zürich**

The Coop department store St. Annahof on Zurich's Bahnhofstrasse reopened in November 2019 after eight months of renovation. Timbatec inspected the ceiling structures of the upper two floors. In addition, the stairwell was extended., Zürich

---



### **Extension Landi, Plaffeien**

The sales area of Landi Plaffeien in the canton of Fribourg was doubled with the extension and conversion project - to around 600 square meters. Timbatec planned the timber construction work of the 2.9 million Swiss franc project., Plaffeien

---



### **Conversion Haldenhof, Hallwil**

Two farmers took over the Haldenhof in Hallwil. They want to run the farm in an animal-friendly and ecological way and therefore planned a conversion to be able to supply the farm as independently as possible. A Besenbeiz is to complement the offer., Hallwil

---



### **Mill yard barn, Hausen am Albis**

In Hausen am Albis stands the listed barn. With the renovation two new apartments could be realized., Hausen am Albis

---



### **Commercial construction Trinova, Wangen SZ**

The company Trinova Nutrition Holding AG in Wangen received a new building made of wood. Timbatec planned the building with 4 floors., Wangen SZ

---



### **Commercial construction Colombo AG, Aefligen**

In Aefligen, between Bern and Solothurn, a commercial building with various ancillary rooms was built. The building with a volume of over 6,000 cubic meters convinces with its load-bearing structure and the facade made of wood., Aefligen



### **Reconstruction Restaurant Hirschenbad, Langenthal**

Where once the people of Langenthal took a bath in the tin tubs, today the Burch family spoils you in the Hirschenbad restaurant. Timbatec was allowed to accompany the renovation project from the condition analysis to the construction management., Langenthal



### **New building workshop, Matzingen**

Domestic wood dominates at the new works yard in Matzingen. The building was completed after a construction period of around one year and was officially inaugurated at the end of September 2019., Matzingen



### **The «Haus zum Lindengarten», Zürich**

The Haus zum Lindengarten on Hirschengraben in Zurich was built in 1725. The renovation was carried out in 2018-2019, but with the least possible intervention in the existing building fabric., Zürich



### **Refurbishment SBB service facility, Biel**

The approximately one hundred year old service facility of the SBB in Biel is a listed building. Timbatec analyzed the condition of the wooden roof structure and worked out the renovation options in cooperation with the monument preservation authorities., Biel



### **«sue+til» residential development, Winterthur**

«sue+til»: Currently the largest residential development made of wood in Switzerland, it comprises 307 apartments, a mixed-use first floor and 200 parking spaces. The 6-storey building is a showcase project for timber construction in Switzerland., Winterthur



### **New construction RFSM Building F, Fribourg**

The new four-story building for the RFSM is the first hospital in Switzerland to be constructed entirely of wood. Timbatec provided all timber engineering services for this Minergie-P building, contributing to the building's safety., Fribourg



### **Estoppey industrial hall, Châtel-St-Denis**

The municipality and Estoppey-Reber AG had the industrial hall in Châtel-St-Denis in the canton of Fribourg renovated. The roof was insulated and reinforced so that it can withstand the heavy snow loads in the future., Châtel-St-Denis





### **New construction Simmental Arena, Zweisimmen**

The Simmental Arena, the new multifunctional hall in Zweisimmen, is largely made of Swiss wood. What's more, it does not require any interior supports at all. The roof is supported by ten 38-meter-long arched trusses., Zweisimmen

---



### **Working platform Flück Holzbau AG, Wangen**

With the TW-Agil 3000, Flück Holzbau AG has installed a joinery system that is unparalleled in Switzerland. For the processing of the cut timber elements, the timber construction company commissioned Timbatec and TS3 with the construction of a wooden working platform., Wangen

---



### **Replacement new building farm store farm Waidhof, Zürich**

At the Waidhof farm in Zurich, the old farm store was replaced with a modern structure and a new cart shelter was built. The whole building project was realized with HSH certified Swiss wood., Zürich

---



### **Gfellerhof, Stettbach ZH**

At the Gfellerhof in Stettbach near Zurich, a feed store and a coach house were each replaced with a larger structure. In addition, the existing barn was structurally strengthened., Stettbach ZH

---



### **Increase Loepfe Brothers Ltd, Wetzikon**

The factory building of the internationally active Loepfe Brothers Ltd in Wetzikon ZH has reached the limit of its capacity. In the addition to the production hall, 2800 square meters of modern office space were created, thus ensuring the company's space requirements., Wetzikon

---



### **Addition of stories Hospital region Oberaargau SRO, Langenthal**

The intensive care unit of the Oberaargau Region Hospital in Langenthal has reached the limits of its capacity. Thanks to a wooden extension, the hospital now meets the increased space requirements., Langenthal

---



### **Extension Lämmerenhütte, Gemmi**

The Lämmerenhütte of the SAC was extended by five meters. The building material was flown to the hut by helicopter., Gemmi

---



### **Extension workshop, Gurmels**

The municipality of Gurmels in the Lake District of Fribourg recently opened a new workshop hall. The timber structure measures 28 by 21 meters and can be opened almost completely on one side - a challenge for Timbatec's timber engineers in terms of building bracing., Gurmels

---



### **Freeway depot, Loveresse BE**

The highest precision was required for the workshop on the A16 freeway in Loveresse in the Bernese Jura. The timber construction elements had to fit exactly because of the enormous dimensions of the 150-meter-long hall., Loveresse BE

---



### **Forestry yard, Buchs AG**

For over 75 years, the Suhr-Buchs Forestry Administration has been looking after and managing the forests of the municipalities of Suhr and Buchs. In 2016, the forestry workshop was rebuilt and a new firewood store was built., Buchs AG

---



### **New training center for the sport of polo, Seuzach**

The Polo Park Zurich has relied entirely on wood as a building material for its new center. Both the operations building and the various stable buildings with the horse stalls have been realized as timber frame buildings., Seuzach

---



### **New building: timber merchant OLWO Otto Lädach, Worb**

OLWO, a timber processor and trader, needed a new office and exhibition building. Thus, a dominant four-story wooden building has been created in the middle of Worb., Worb

---



### **House of Switzerland, Sotchi, Milano, Zürich, Davos, Rio, ...**

For "Presence Switzerland", the concept was developed for a multi-use platform with adequate space (730 m<sup>2</sup>) to serve public diplomacy and to promote Switzerland's interests at major international events. Timbatec constructed a robust, demountable timber construction system for this purpose., Sotchi, Milano, Zürich, Davos, Rio, ...

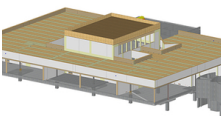
---



### **Johnsonhaus, Köniz**

In the heart of the municipality of Köniz, in a sunny location close to the center, a residential and commercial building has been realized on Neuhausplatz. Not only the facade but also the supporting structure is made of wood., Köniz

---



### **Increase Bell AG, Basel**

At Bell AG on Elsässerstrasse in Basel, new offices and an auditorium were built on the 5th floor, above the existing production facility., Basel

---



### **Mobilcity Competence Center Car, Wankdorf Bern**

It is unusual for ten associations in one industry to join forces to create a joint training center. This is exactly what the automotive associations did in Bern Wankdorf on Wölflistrasse. They built a new building as a training and further education center for the automotive industry in Switzerland. Timbatec was commissioned for the demanding planning of these halls., Wankdorf Bern

---



### **Conversion Haus zum Kiel, Zürich**

The baroque Haus zum Kiel is located on Hirschengraben in Zurich's old town. The building exhibited severe subsidence and various damages to the building structure and supporting structure. Timbatec AG was commissioned to examine load transfer methods and define measures for the conversion., Zürich

---



### **New construction of Mosimann and Stromer Campus halls, Oberwangen**

The two symmetrically arranged halls are located on Freiburgstrasse in Oberwangen. The cubes with the dimensions 50x26x12 m shape the image of the landscape next to the highway., Oberwangen

---



### **Warehouse Thommen Furler, Rüti bei Büren**

A new storage hall was designed for the acids and alkalis to be stored by Thommen Furler AG, which can cope with the high demands of aggressive chemicals., Rüti bei Büren

---



### **Connecting bridge Thommen Furler, Rüti bei Büren, Bern**

A pipeline bridge had to be designed for the transport and filling of the chemicals from the storage facilities via the warehouses to the railroad tracks, which would withstand the high demands of the chemicals such as acids and alkalis., Rüti bei Büren, Bern

---



### **New construction industrial hall Schwarz AG, Schüpbach**

A commercial hall with a storage section, a gallery floor and an office wing according to the Minergie standard - Timbatec makes it possible., Schüpbach

---



### **New construction salt storage hall, Mühlethurnen**

Due to damage to the concrete and steel structure, the existing salt storage hall at the road inspectorate's depot in Seftigen had to be replaced., Mühlethurnen

---



### **New residential and commercial building Hohlstrasse, Zürich**

The seven-story building is an extension to the existing commercial building and spans it cantilevered., Zürich

---



### **New construction warehouse Jungheinrich AG, Hirschthal**

New storage resources were needed at the Jungheinrich company site in Hirschthal. To achieve this, a warehouse with a large forecourt roof in wood was planned., Hirschthal

---



### **Extension of industrial building Lanz-Anliker AG, Rohrbach**

The textile processing company Lanz-Anliker AG in Rohrbach needed additional space for processing technical textiles and for offices. Clarifications showed that an addition could be built on top of the existing building., Rohrbach

---



### **New construction roofing Creabeton, Lyss**

Creabeton Lyss manufactures a variety of concrete semi-finished products, including various interlocking blocks for use in horticulture., Lyss

---



### **Redevelopment Höchhus, Steffisburg**

This property in Steffisburg belongs to the Höchhus Foundation and is a listed building. The Höchhus is one of the oldest buildings in the village., Steffisburg

---



### **New construction warehouse Comestibles Pernet, Zweisimmen**

Construction of a production and storage hall for the company Pernet in Zweisimmen. The execution planning and realization was carried out by the company Hector Egger in Langenthal as general contractor., Zweisimmen

---



### **New construction indoor swimming pool, Frutigen**

In 2006, the Frutigen indoor swimming pool was destroyed by fire. The demolition of the supporting structure made way for a new indoor swimming pool. In order to design a contemporary indoor swimming pool, the client invited an architectural competition., Frutigen

---



### **Wood construction hall Ramseier, Grenchen**

The company Ramseier Technologies AG is active in the field of industrial powder coating technology and is building a new hall in Grenchen., Grenchen

---



### **New construction of Uetendorf workshop, Uetendorf**

As part of the renovation of the Werkhof Uetendorf, the need for additional rooms was identified. These rooms were planned in an additional two-story building., Uetendorf

---



### **New construction mountain house Morenia, Saas-Fee**

The new building of the 2-storey mountain restaurant Morenia in Saas-Fee is located at an altitude of 2'570 m.a.s.l. and measures approximately 43 x 21 m., Saas-Fee

---





### **Reconstruction-renovation tithe barn, Grundbach area, Thun**

The tithe barn was one of the oldest preserved buildings in the city of Thun. After a fire in 1999, it had to be renovated in cooperation with the preservation of historical monuments of the canton of Bern., Thun

---



### **MFH Supply Center Weier, Schwarzenegg**

The municipality of Oberlangenegg decided at the beginning of 2000 - it was the time when Lothar raged - to build this project in wood. With a supply center that should be deliberately dominant and quickly recognizable, Schwarzenegg gets a village center that represents and enlivens the village image., Schwarzenegg

---



### **Reconstruction Bälliz 29, Thun**

The existing building in the center of Thun was converted into business premises and apartments. On the 1st floor, three high reinforced concrete girders were installed, which protruded from above about 70 cm into the clearance gauge. The planned store was to be column-free with a smooth soffit. The existing beam layers were to remain unchanged., Thun

---



### **Warehouse Steiner AG, Walkringen BE**

The log yard of the company Steiner Sägewerk und Holzhandel is located in a hollow between the railroad line and the road. On a width of approx. 60 m and a length of 400 m, a superstructure and logistics concept for the future operation had to be created., Walkringen BE