

# Barn Dingenhart, Frauenfeld

2024

---



The «Dingenhart» detached house project breathed new life into an old barn in a picturesque hamlet near Frauenfeld, creating an eye-catching building made of wood and exposed concrete.

## The project

Not far from Frauenfeld, in the small hamlet of Dingenhart, a spacious detached house has been built in the last two years. The building impresses with its combination of wood and exposed concrete. The close collaboration between architects and timber construction engineers, as well as the will and passion to plan every detail precisely, has resulted in a showcase project for modern and honest timber construction architecture.

## The construction method

The building was planned and constructed as a classic timber frame structure with a solid central zone. In order to create the large and airy rooms at the two ends of the building, a grid of slender laminated beams made of Swiss beech wood was used. The roof was planned and constructed as a raftered roof with a cold screed in the style of traditional farmhouses.

## The challenge

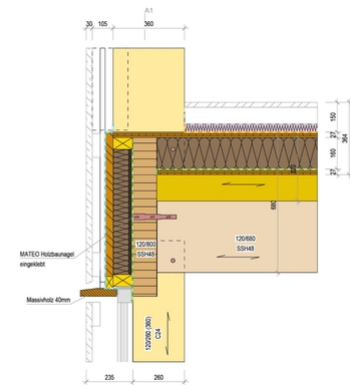
As the principle of «no cover parts and reducing the use of steel to a minimum» was the top priority in the planning from the outset, all details had to be solved with the utmost conscientiousness and creativity.



Attention to detail: well thought out down to the smallest corner



An old barn is given a new lease of life



No steel parts: Detailed solution with beech nails



A cozy atmosphere thanks to wooden architecture

### Construction costs

- BKP 1-9: 4.9 Mio. CHF
- BKP 2: 4.5 Mio. CHF
- BKP 214: 1.2 Mio. CHF (ohne Fassade)
- Fassade 350'000 CHF

### Services of Timbatec

- SIA Phase 31 Vorprojekt
- SIA Phase 32 Bauprojekt
- SIA Phase 41 Ausschreibung und Offertenvergleich
- SIA Phase 51 Ausführungsprojekt
- SIA Phase 52 Ausführung
- Fachplanung Bauphysik
- Kostenschätzung

### Architekt

Bernath + Widmer Architekten AG  
8048 Zürich

### Holzbauingenieur

Timbatec Holzbauingenieure (Schweiz) AG Zürich  
8005 Zürich

### Bauingenieur

Dr. Deuring + Oehninger AG  
8401 Winterthur

### Bauphysik

Timbatec Holzbauingenieure (Schweiz) AG Zürich  
8005 Zürich

### Fotografie

Roland Bernath

### Auftraggeber

Bernath + Widmer Architekten AG  
8048 Zürich