

Apartment house SolVita7, Biel/Bienne

2012



In a preferred location, the building offers space for seven exclusive apartments. The modern timber construction meets the MINERGIE-ECO standard. The high requirements for eco-balance and energy consumption are thus fulfilled.

The project

The building is situated in a privileged location at the southern foot of the Jura with a wonderful view over the entire city of Biel. The execution The compact volume of the building accommodates seven exclusive apartments. The modern and well thought-out timber construction meets the MINERGIE-ECO standard.

The construction method

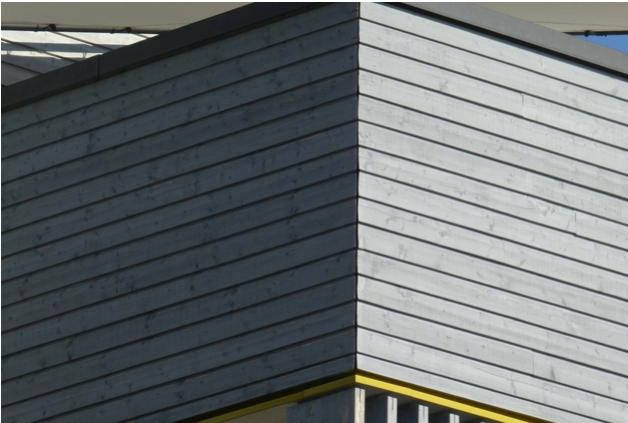
Thus, the construction also meets the high requirements for ecological balance and energy consumption during operation. The short transport routes additionally enable an ecological lifestyle.



The terrace (Photos: Marketing Casa-Vita / Frefel Holzbau AG, Mollis)



View after 6 years



Facade with patina after 6 years



Detail Fassade

Construction Data

- 1600 m² Novatop (floor system)
- C24 60 m³ Timber
- 730 m² External wall formwork

Services of Timbatec

- SIA Phase 31 Preliminary design
- Fire protection planning
- cost estimate
- SIA Phase 32 Construction project
- Structural analysis and design
- SIA Phase 41 Tendering and comparison of offers
- SIA Phase 51 Implementation project
- Site supervision and site inspections

Timber Construction Engineers

Timbatec Holzbauingenieure Schweiz AG, Thun
3600 Thun

Building owner

CASA-VITA, Frefel Holzbau AG
8753 Mollis

Timber construction

CASA-VITA, Frefel Holzbau AG
8753 Mollis

Architect

Bauzeit Architekten GmbH
2502 Biel